

The Installation Process Manual

Sports Fields



Playgrounds



Landscaping



General Information

- ProGame shock pads are made of closed-cell, chemically cross-linked polyethylene foam specially designed for artificial grass underlays. The combination of the unique XC punching with a layer of laminated PET non-woven fabric guarantees excellent drainage properties, quick and easy installation, and very high dimensional stability on every field.
- The shock pads are provided in rolls with a width of either 1.8m or 2m. Roll length is according customer request.

- Delivery of the shock pads are usually done via truck. Unloading is only possible when construction people are present.
- Due to the light weight material, ProGame shock pads can be unloaded and installed without machinery. We recommend for the installation at least two workers and the usage of ProGame tape and a tape un-roller (welding machine).

Tools & Requirements:



Shock Pad
Rolls

Sold separately:



Tape



Welding
machine

Prepare::



Subbase



Turf



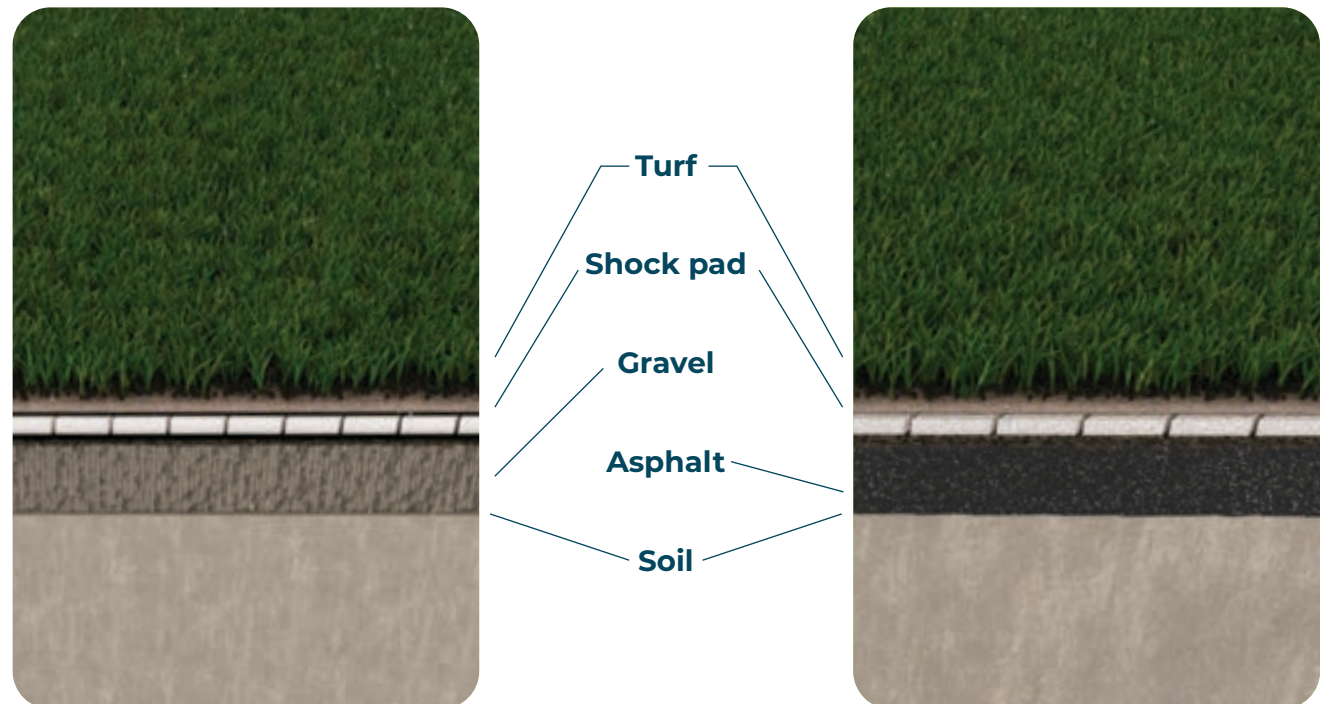
Cutter Knife



Min. 2 People

Sub-base Requirements

- ProGame shock pads can be installed directly on a smooth levelled unbounded sub-base of gravel or on asphalt.
- The shock pads are laid on top of the sub-base with the non-woven layer at the bottom. In case of installing a horizontal drainage system, an impermeable layer will be installed below the shock pads and in this case the non-woven of the XC Plus (with lateral drainage lines) shock pad is facing up.



Part 1: Installation of the Progame Shock Pads



Installation direction of ProGame shock pads is normally in the same direction as the synthetic turf carpet, in cross direction of the a full size pitch.



Lay shock pad rolls side by side and start unrolling the rolls from one side of the pitch.

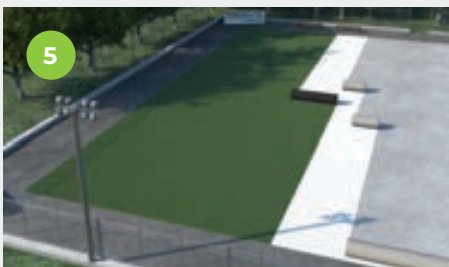


Connect the rolls in length direction with ProGame adhesive tape. We recommend to use our welding machine to tape the rolls together, which is the most efficient and easiest way of taping.

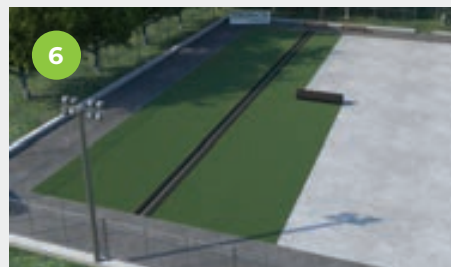


Leave the overlapping pad at the sides of the pitch until the artificial turf carpet and infill is installed. This overlap is for compensation of a possible movement during installation and can be cut close to pitch edge when installation of the whole system is done.

Part 2: Installation of the Artificial Turf



After installation of 3 rolls of ProGame shock pad, the first synthetic turf roll can be installed on top of the foam pad. Particularly in windy days, it is mandatory to follow the instruction above.



Turf is laid and glued with a bi component glue, lines can be tufted in or added during installation process.



When the turf is laid and glued, last process is spread of infill. Your field should be ready by now!

Scan the codes to view the installation video and to see some of our recent projects!

Installation Video



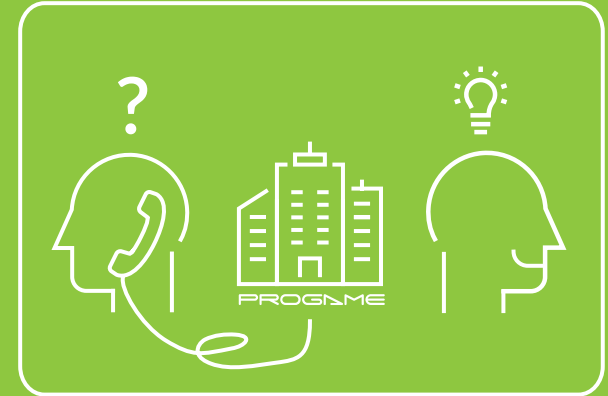
Project references



Do you have any questions? We are here to help you!

Should you experience any problems throughout the installation process: Do not hesitate to contact us!

PROGAME



Let's talk about **your project**

Trocellen ProGame Shock Pads

TROCELLEN GmbH
Mülheimer Straße 26
D-53840 Troisdorf

T: +49 2241 2549 000 F: +49 2241 2549 099
E: progame@trocellen.com
www.progame-shockpads.com



Trocellen S.E.A. Sdn. Bhd. (116243-U)

Lot 2213, Batu 9 Kebun Baru, Jalan Kasawari,
42500 Telok Panglima Garang,
Selangor, Malaysia

T: +60 3-3122 1212 F: +60 3-122 1211
E: sales@trocellen.com.my
www.trocellen.com.my

